

CERTIFICATE OF LOCATION OF GOVERNMENT CORNER

NORTHEAST Corner of Section 4, Township 107N, Range 40 W, 5th P.M.

STATE OF MINNESOTA, County of MURRAY

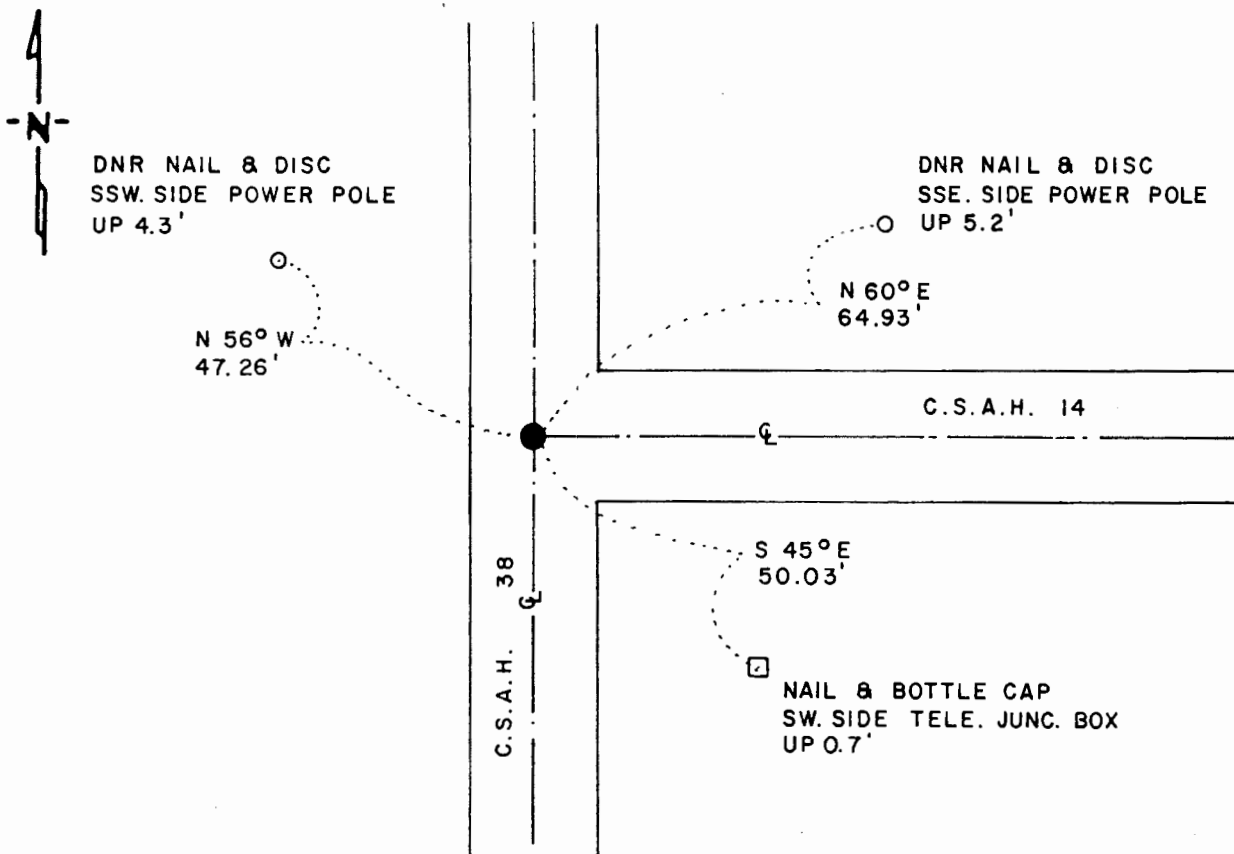
At the corner location shown on the sketch

On 10-12-89 found a RAILROAD SPIKE, DOWN 0.1
DATE

left monument as found, lowered monument, removed monument (explain)

On _____ placed a _____
DATE

SKETCH OF REFERENCE TIES



BEARINGS OBSERVED WITH COMPASS

Statement of evidence relative to this corner location is on back of page LRP 12-29-89
WMA - 1474

I hereby certify that this document and the data contained herein was prepared by me or under my direct supervision

Lowell R. Pommeroy Jr. 12-29-89
SIGNATURE DATE

Registration No. 17005

Land Surveyor, Professional Engineer

County Surveyor County Engineer

OFFICE OF THE COUNTY RECORDER

County of MURRAY

I hereby certify that this document was filed in the Co. Recorders office at _____ M. on the _____ day of _____ A.D., 19 _____

County Recorder James V. Johnson

By JAN 3 1990, Deputy

DOCUMENT NO. _____

Northeast Corner Section 4, Township 107 North, Range 40 West

The DNR Bureau of Engineering contacted the following offices for information on this corner:

MN Secretary of State
Murray County Recorder and Highway Engineer
Bell Surveying at Worthington
RCM at Gaylord
Lyle Moseng at Marshall
Madsen Land Surveying at Fairmont

- 1861 The U.S. General Land Office field notes in the Secretary of State's Office show this corner is marked with a wood post set in mound of earth with pits and trench dug around the mound.
- 1899 Surveyor's Record Book A, on page 84, obtained from the County Recorder's Office, shows a survey by J. W. Woolstencroft. This corner is described as a stone and stake with a fence corner on line 31 ft. west, fence corner 41 ft. northeast, fence corner 47.6 ft. southeast. Corner is four stones on top of each other. This information is also contained in the County Highway Engineer's Office.
- 1930's Surveyor's Record Book, obtained from the County Highway Engineer's Office, contains the following about the corner by F. A. March:
"Stone" tack in telephone pole west on line 29.5 ft.
R.P. tack in telephone pole SE 45.0 ft.
- 1967 April 18, a page of field notes, from the DNR Bureau of Engineering records shows a railroad spike was set for the corner from 1936 and 1948 ties. Corner is shown:
on center line road east, on fence line west
2.5 ft. west of center line north-south road
- 1979 A Certificate of Survey, worksheet and field notes, obtained from RCM, show this corner as a found 8" round concrete cylinder with iron in center, 12" deep. Three reference ties are shown to the corner. This information is also contained in the County Highway Engineer's Office in a new book.
- 1985 A Certificate of Survey, worksheet and field notes, obtained from Madsen Land Surveying, surveyed by Gary Martin, RLS #12967, show this corner as a railroad spike set over a concrete monument. Corner is shown to measure:
2635.55 ft. from the east quarter corner Section 33
on center line north-south road
3 ft. north of fence west, 2 ft. north of center line road east
Three reference ties are shown, two of which are record ties.
- 1989 October, the DNR Bureau of Engineering conducted a search for the corner and found a railroad spike down 0.1 ft.. Found reference ties that agree with the railroad spike. Removed spike and dug a 1 ft. east-west by 2 ft. north-south hole centered on the spike (bituminous road surface). Encountered an old road bed down 3 ft., dug to a depth of 4 ft. and probed down to 5.5 ft., but found nothing. Checked with an electronic locator, but found nothing else. Reset railroad spike as found and found it to be:
at intersection of roads north-south and east
2635.29 ft. from the east quarter corner Section 33

Analysis of the above information led the DNR Bureau of Engineering to conclude that the found railroad spike, at the intersection of roads, marks the location of the corner. Disappearance of the concrete monument is attributed to road construction.